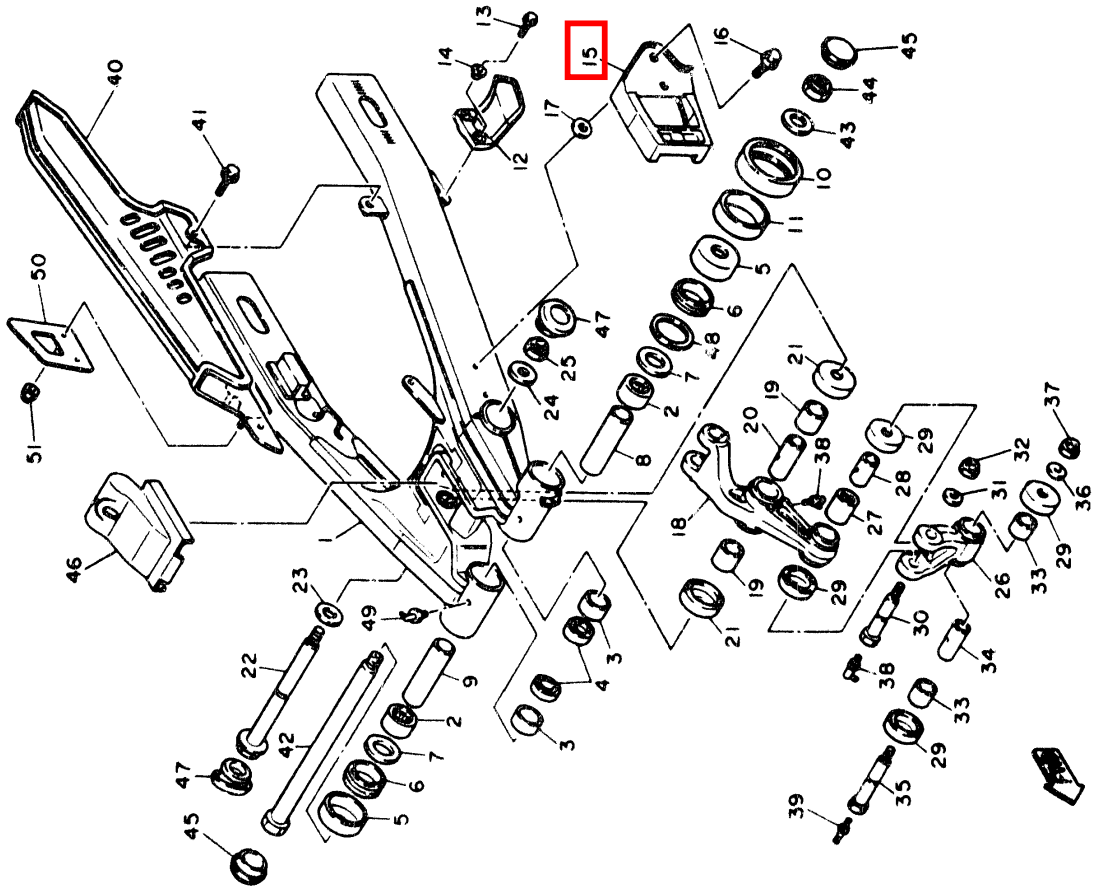


FIG. 22 REAR ARM

REF. NO.	PART NO.	DESCRIPTION	Q'TY	REMARKS
1	3YF-22110-00-P0	REAR ARM COMP.	1	GRAY METALLIC 1
2	93317-32231	BEARING, cylindrical	2	
3	90380-22111	BUSH, solid	2	
4	93106-22019	OIL SEAL (DC 22-28-8)	2	
5	2K6-22128-01	COVER, thrust 1	2	
6	93108-35004	OIL SEAL (35-41-8)	2	
7	3YF-22149-00	WASHER	2	
8	1VJ-22123-00	BUSH 1	1	
9	90387-160W0	COLLAR	1	
10	5X6-22151-10	SEAL, guard	1	
11	90387-440G3	COLLAR	1	
12	38V-22199-00	SUPPORT, chain	1	
13	95811-06020	BOLT, flange	2	
14	90387-06737	COLLAR	2	
15	2KF-22147-00	PROTECTOR, chain	1	
16	95826-06010	BOLT, flange	2	
17	90209-06223	WASHER	2	
18	3YF-2217A-00	ARM, relay	1	
19	90386-20120	BUSH	2	
20	90380-14095	BUSH, solid	1	
21	34L-22128-00	COVER, thrust 1	2	
22	90105-12668	BOLT, washer based	1	
23	90201-140G9	WASHER, plate	1	
24	90201-120A5	WASHER, plate	1	
25	95611-12100	NUT, u	1	
26	34L-2217F-00	ROD, connecting 1	1	
27	93315-31732	BEARING, cylindrical	1	
28	90387-121H1	COLLAR	1	



D7